

Turning off the Intel PROSet Wireless Utility Manager

To turn off the Intel wireless utility manager and enable the Windows wireless manager:

1. Go to Start → Programs

2. Run **Intel PROSet**

The Intelproset/Wireless WiFi Connection Utility window opens

3. Click on **Advanced** → **Use Windows to Manage WiFi** as shown below



Figure 1 – Intel PROSet WiFi Connection Utility

The Use Windows to Manage WiFi? window appears

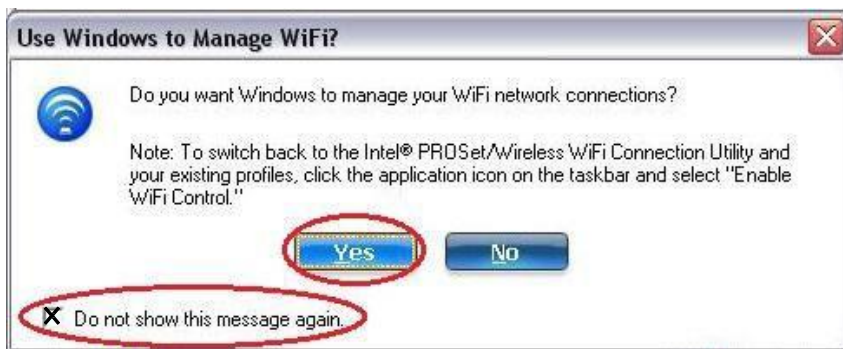


Figure 2 - Use Windows to Manage WiFi

4. **Checkmark** the Do not show this message again box.
5. Click **Yes**



Figure 3 - Windows is currently managing this WiFi adapter

6. Click **Close**